

# The Importance of Dental Care

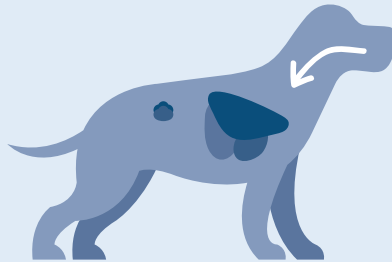


Effective lifetime dental care requires a multifaceted approach and should be designed to meet the unique need of each client and patient.



## COMMUNICATION

- Regularly review with the hospital team the importance of this so it is **messaged by everyone** in the practice
- Make recommendations for dental cleanings **before a problem starts**
- Use **specific vocabulary** (e.g., periodontal disease, gingivitis)
- **Discuss long-term issues** such as chronic pain, tooth loss, and the potential for seeing of bacterial infection to extra-oral locations



## HOME CARE

- **Be specific** with your recommendations
- Emphasize the **importance of daily brushing**
- **Start brushing at a young age**, if possible
- **Visit [www.vohc.org](http://www.vohc.org)** for recommendations on diets, treats, and toys



## EXAMINATIONS

- **Perform oral examinations** on every patient, every visit
- **Start oral manipulation early** to acclimate patients
- **Show clients what you see** during the physical exam



## WELLNESS CLEANINGS

- **Anesthetized cleanings:** scaling, probing and charting, polishing
- Take and interpret **dental radiographs**
- **Discuss radiographs and extractions** before the cleaning
- Take **before & after photographs** of the professional dental cleaning

